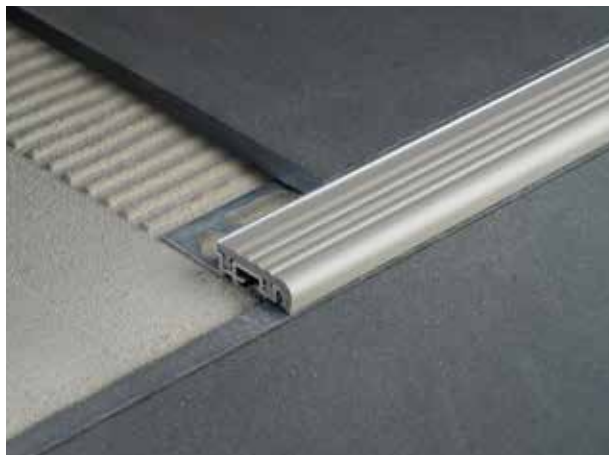


STAIRTEC FSF

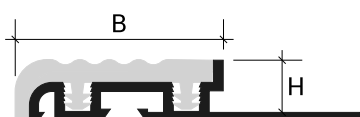
PRODUCT DESCRIPTION



STAIRTEC FSF stair nosing profiles resolve the challenge of transitions from tile flooring to tile stairs. This product range offers practical, efficient, and durable solutions.

TECHNICAL FEATURES

Length: 2,70 meters



Aluminum + Rubber Insert

B = 30 mm

MATERIAL DESCRIPTION

Aluminum

The primary aluminum alloy EN AW-6060 in T6 temper is suitable for complex extrusions, offering high strength and an excellent natural surface finish that lends itself well to subsequent finishing processes.



P23



P32



P51

stairtec >> FSF in Natural Aluminum			
Item	HxB mm	Finish	
FSF80A23270	8x30	A23 - Cement Grey	☒
FSF100A23270	10x30	A23 - Cement Grey	☒
FSF125A23270	12,5x30	A23 - Cement Grey	☒
FSF80A32270	8x30	A32 - Dark Beige	☒
FSF100A32270	10x30	A32 - Dark Beige	☒
FSF125A32270	12,5x30	A32 - Dark Beige	☒
FSF80A51270	8x30	A51 - Black	☒
FSF100A51270	10x30	A51 - Black	☒
FSF125A51270	12,5x30	A51 - Black	☒

☒ SELFLINE/KIT PRE-CUT

stairtec >> FSFI Rubber Insert Spare part		
Item	HxB mm	Finish
FSFI30P23	9,5x30	P23 - Cement Grey
FSFI30P32	9,5x30	P32 - Dark Beige
FSFI30P51	9,5x30	P51 - Black

APPLICATION

1. Choose the H-size profile corresponding to the thickness of the tile to be laid, taking care to ensure that the profile does not exceed the edge of the floor but is positioned 0.5 to 1 mm lower.
2. Spread the adhesive in the profile application area with the help of a notched trowel;
3. Cut the profile to the required length and place it so that the base sinks into the adhesive, pressing and aligning it;
4. Apply an additional layer of adhesive to the perforation and in the cavities of the vertical section of the profile in contact with the edge of the floor;
5. Generally leave a space of about 2 mm between the profile and the edge of the tile to be filled later with sealant or grout;
6. Remove any adhesive residue from the profile immediately.

N.B.: Aluminum profiles offer limited resistance to alkaline substances, so their use must be evaluated according to the expected chemical aggressions. Aluminum profiles in contact with cementitious substances can be attacked by corrosion processes, so residues of used adhesives and sealants should be removed immediately. When laying, the right amount of adhesive must be used and the right drying times observed, avoiding creating cavities in which water can stagnate, which would lead to the formation of alkaline substances (aluminum hydroxide) and trigger corrosive electrolytic phenomena.

CLEANING AND MAINTENANCE

ALUMINIUM:

Aluminum requires no special maintenance.

For cleaning, use colorless alcohol diluted in water or neutral detergents, avoiding acidic ones (e.g., hydrochloric or hydrofluoric acid); use non-abrasive sponges or cloths to avoid damage. We recommend not applying cleaners directly to surfaces. After cleaning, rinse with water and dry immediately with a soft cloth. Avoid polishes. Quickly remove residual cement or grout to protect the surface.

WARNINGS

These profiles should be handled with care, using cut-resistant gloves. The indications and prescriptions herein, while corresponding to our experience, are to be considered purely indicative and must be confirmed by exhaustive practical applications. Profilitec declines any responsibility for any damage to people or things resulting from improper use of the products. The user is required to determine whether or not the product is suitable for use and assumes all responsibility arising from incorrect installation of the material.

BILL OF QUANTITIES ITEM

Supply and installation of profile in _____ (material), with _____ finish (refer to the Material Description section) in the characteristic size _____ mm, equipped with a punched flange that guarantees a perfect grip with the adhesive used. Profile with dovetail inner part for better adhesive grip.

Family type _____ of the Profilitec company as a step nosing profile for protecting the covering to be supplied and installed properly, following the methods and fields of application suggested by the manufacturer.

Profile length: 2700 mm

Profile SKU: _____

Material: _____ €/m

Installation: _____ €/m

Totale price: _____ €/m

Profilitec S.p.A.
Via Scotte, 3 - 36033 Isola Vicentina (Vicenza), ITALY
Tel: +39 0444 268311
e-mail: profilitec@profilitec.com

Profilitec Corp.
e-mail: customerservice@profilitec.com

Profilitec Ibérica, S.L.U.
e-mail: iberica@profilitec.com

Profilitec France
e-mail: france@profilitec.com